

Ordnance Survey Ireland Licence No.  
AR0005421 © Government of Ireland

PRI  
GA

PUE  
OP

PAV

UNIT 2 - 2 BED / 3 PERSON (House)		
	Required:	Achieved:
Total area	70.0m <sup>2</sup>	76.88m <sup>2</sup>
Agg. Living	28.0m <sup>2</sup>	28.5m <sup>2</sup>
Storage	3m <sup>2</sup>	5.7m <sup>2</sup>
Room:	Req:	Achieved:
Living	13.0m <sup>2</sup>	28.5m <sup>2</sup>
Kitchen / Dining	-	
Bedroom 1	13.0m <sup>2</sup>	13.74m <sup>2</sup>
Bedroom 2	7.1m <sup>2</sup>	7.47m <sup>2</sup>

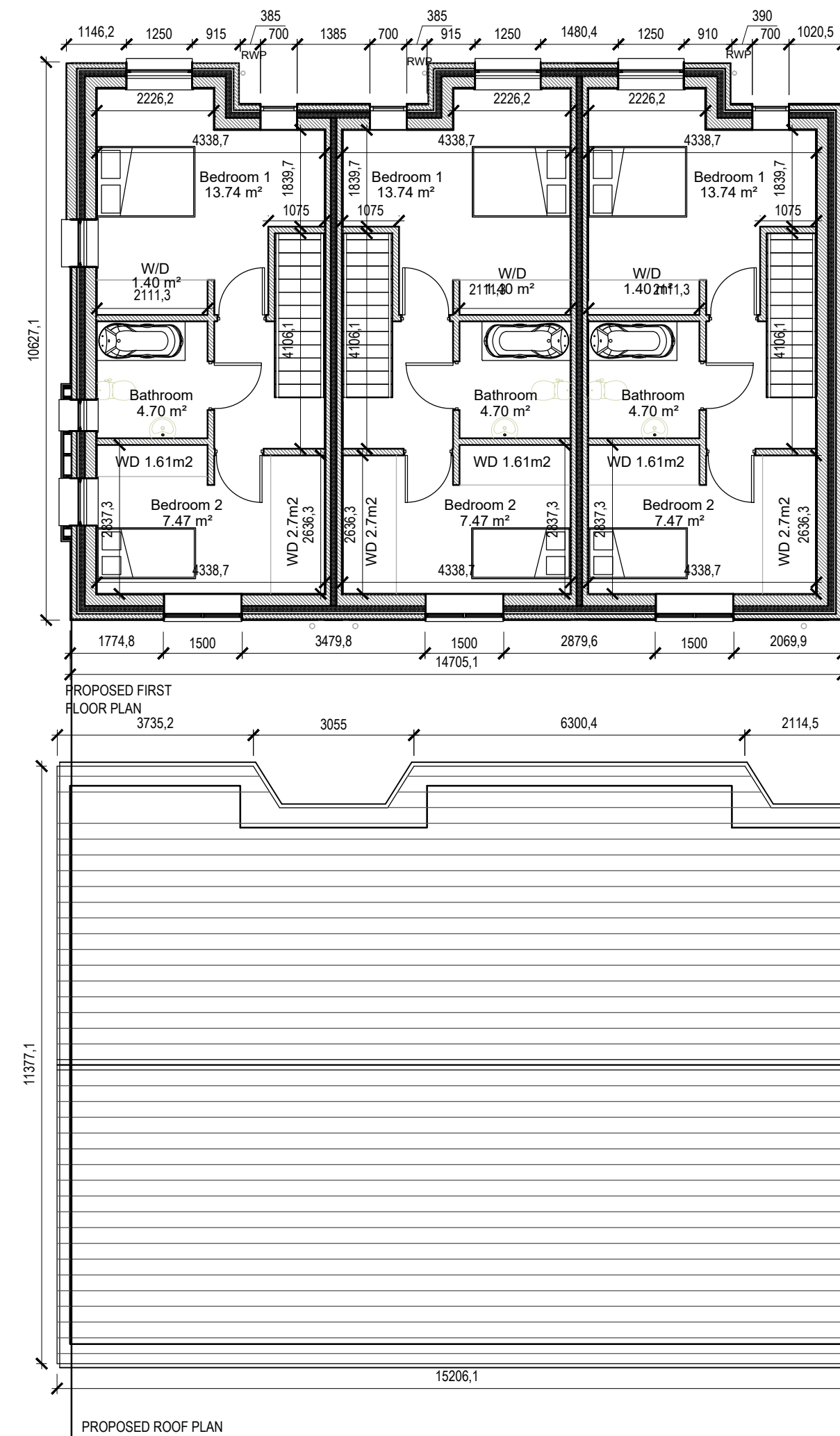
UNIT 3 - 2 BED / 3 PERSON (House)		
	Required:	Achieved:
Total area	70.0m <sup>2</sup>	76.88m <sup>2</sup>
Agg. Living	28.0m <sup>2</sup>	28.5m <sup>2</sup>
Storage	3m <sup>2</sup>	5.7m <sup>2</sup>
Room:	Req:	Achieved:
Living	13.0m <sup>2</sup>	28.5m <sup>2</sup>
Kitchen / Dining	-	
Bedroom 1	13.0m <sup>2</sup>	13.74m <sup>2</sup>
Bedroom 2	7.1m <sup>2</sup>	7.47m <sup>2</sup>

[illegible]

St. Patrick's House, Newtown, Waterford, Ireland. X91-RR7  
t: +353 (0)51 878888 f: +353 (0)51 878794 e: mail@cifa.ie w: www.cifa.ie

CLIENT:	TIPPERARY COUNTY COUNCIL		
JOB:	Social Housing Development at Grove Street, Roscrea, Co. Tipperary		
DRAWING:	Proposed 2 Storey House Units Units 1 to 3 Grove Street Plans, Section and Elevations		
DATE:	October 2011	SCALE:	1:100 A1
DRAWN:	Michael J. O'Connell	CHECKED:	Pauline O'Connell

JOB NUMBER: 2021012	DWG NUMBER: PL-200	REVISION:
------------------------	-----------------------	-----------



350mm RC raft foundation to engineers design



Selected colour concrete flat roof tiles on 35x50mm treated timber battens on breathing membrane on prefabricated roof trusses @ 400mm c/c engineers design & specification.

New aluminium 120mm half-round gutters & 100mm Downpipes

350mm thick wall construction  
White paint to fine knapp plaster finish on

100mm concrete block external leaf with  
110mm cavity wall insulation with  
40mm air cavity with  
100mm concrete block internal leaf with  
hardwall plaster finish on scratch and

scudded coats with  
stainless steel twist type wall ties at 750mm  
c/c horizontally & 450mm c/c vertically with  
one at every course around window and  
door open.

element should be so designed to ensure a u-value rating exceeding that of 0.16 w/m<sup>2</sup>K.

