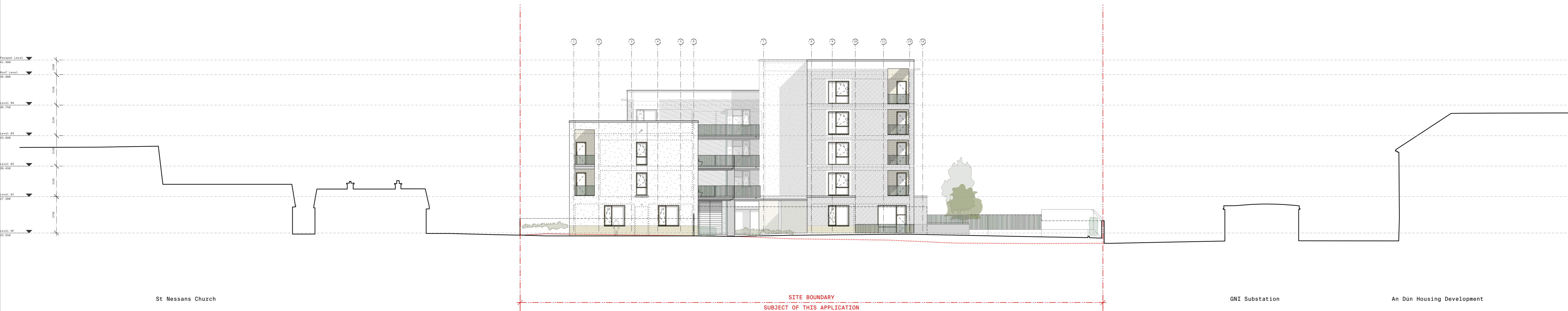
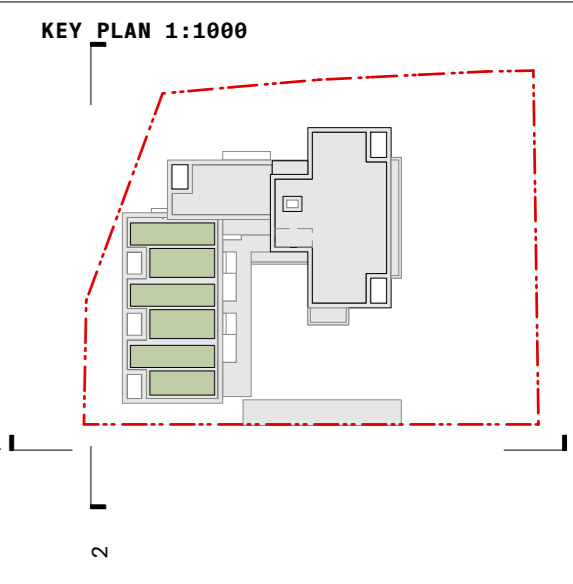


MATERIAL KEY	
1	Render Wet Dash
2	Render Smooth
3	Masonry (white)
4	Concrete (grey)
5	Masonry (buff)
6	Aluclad Window/Door System
7	Metalwork Window/Roof
8	Galv/PPC Metal Railings



1 Proposed Street Elevation (North) Scale: 1:200@ A1



2 Proposed Side Elevation (East) Scale: 1:200@ A1

GENERAL NOTES: (1) Use figured dimensions only. (2) Do not scale off drawings. (3) Check all dimensions on site. (4) Notify the architect of any discrepancies immediately. (5) Read all drawings in conjunction with the specifications and other contract drawings. (6) If you have received this document in error, please notify mgne architects immediately.

DISCLAIMER: This document is solely for the use of the named Client. It describes a design intent for a specific project. It may be used by the Client when entering into a building contract. All third parties take note that: (1) the document has been prepared for a specific reason; (2) the advice on the drawing are not intended for any third parties; (3) third parties must rely on their own independent professional advice; (4) the document expressly does not provide any warranty whatsoever to third parties; and (5) mgne architects expressly disclaims all liability to third parties arising from this document.

rev	date	drawn	review	apprv	notes
-	19.08.2024	WC	BF	RMC	ISSUED FOR PLANNING

project: **Raheen Social Housing**
 client: **Limerick CC Council**
 job #: **2301**

title: **PROPOSED CONTEXTUAL ELEVATION**
 number: **RSH-MGNE-XX-PL-DR-A-211**
 rev: - **STAGE 2B** **1:200**

mgne architects
 23 Mountjoy Sq
 Dublin D01 E0F8
 mgne.ie