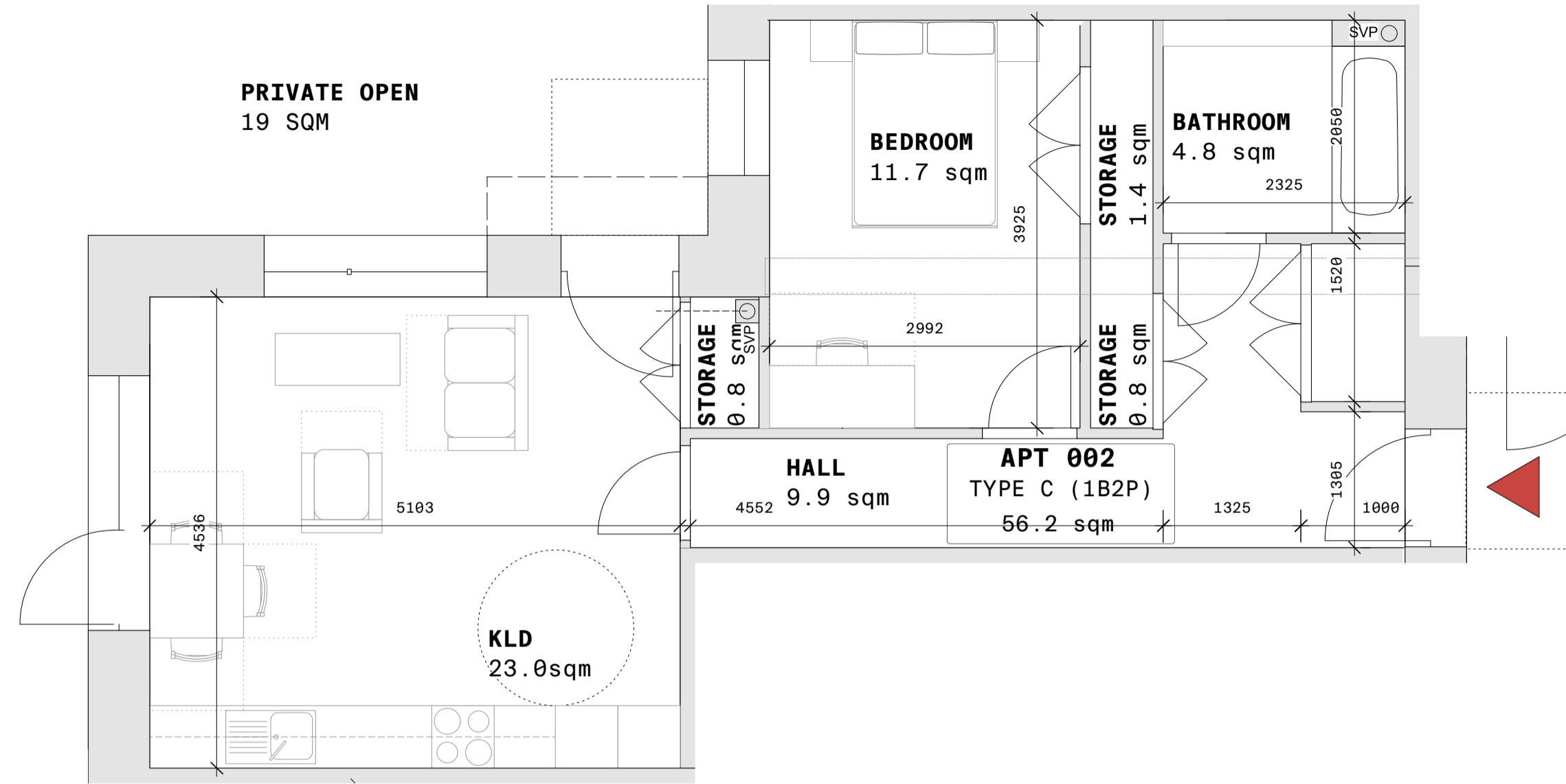


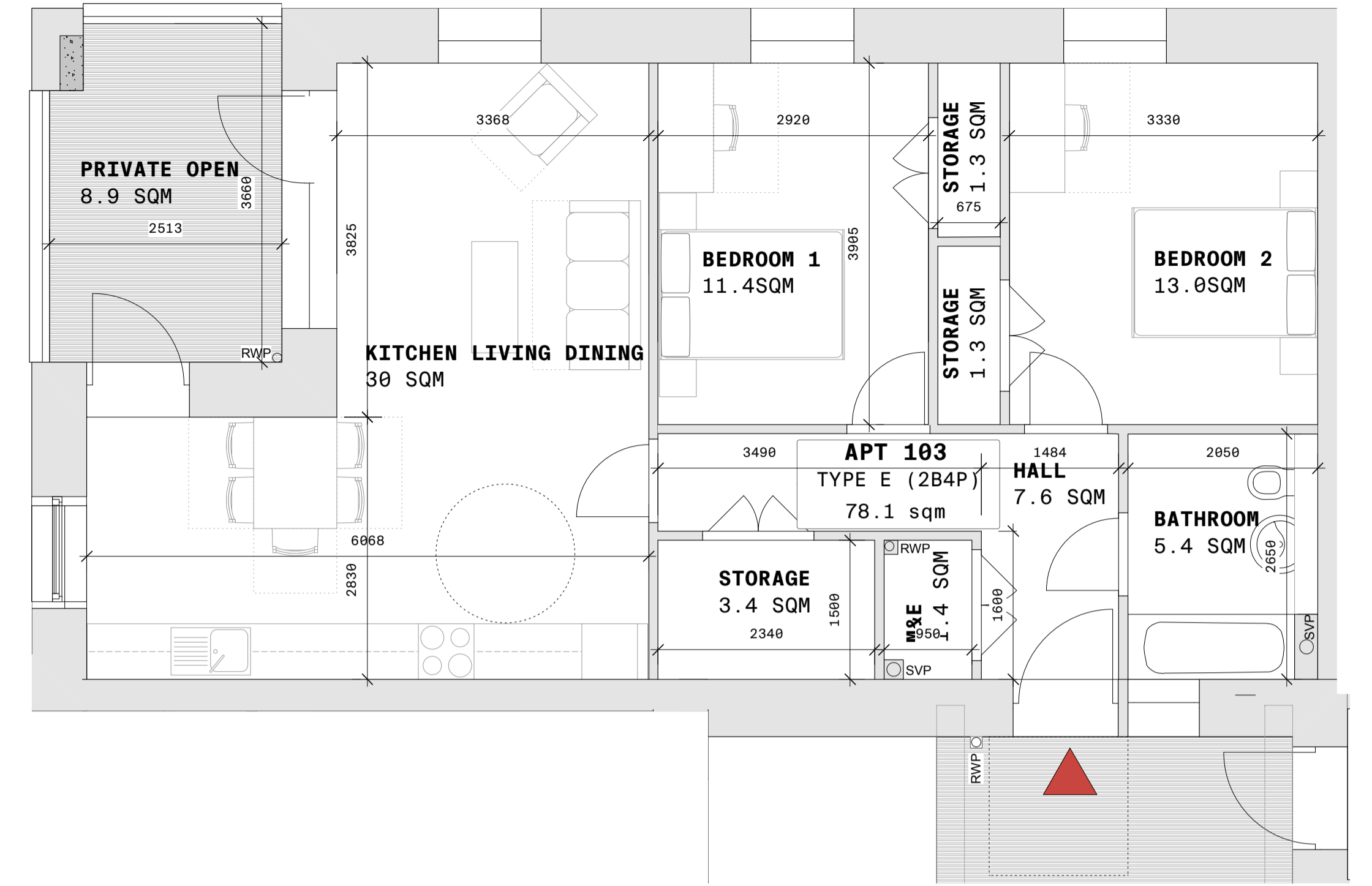
Unit Type	MINIMUM*	TYPE C	COMPLIANT
Unit Description	1B2P	1B2P	
Universal Design		N	
Unit Area	45sqm	56.2sqm	Y
Kitchen Living Dining area	23sqm	23sqm	Y
width	3.3m	4.5m	Y
Bedroom 1 area	11.4sqm	11.7sqm	Y
width	2.1m	2.9m	Y
Storage area	3sqm	3sqm	Y
Private Amenity area	5sqm	19sqm	Y
width	1.5m	2.7m	Y

* Per Design Standards for New Apartments, Dept of Housing 2022



1 UNIT TYPE C - 1B2P Scale: 1:50@A1

APT NO 002

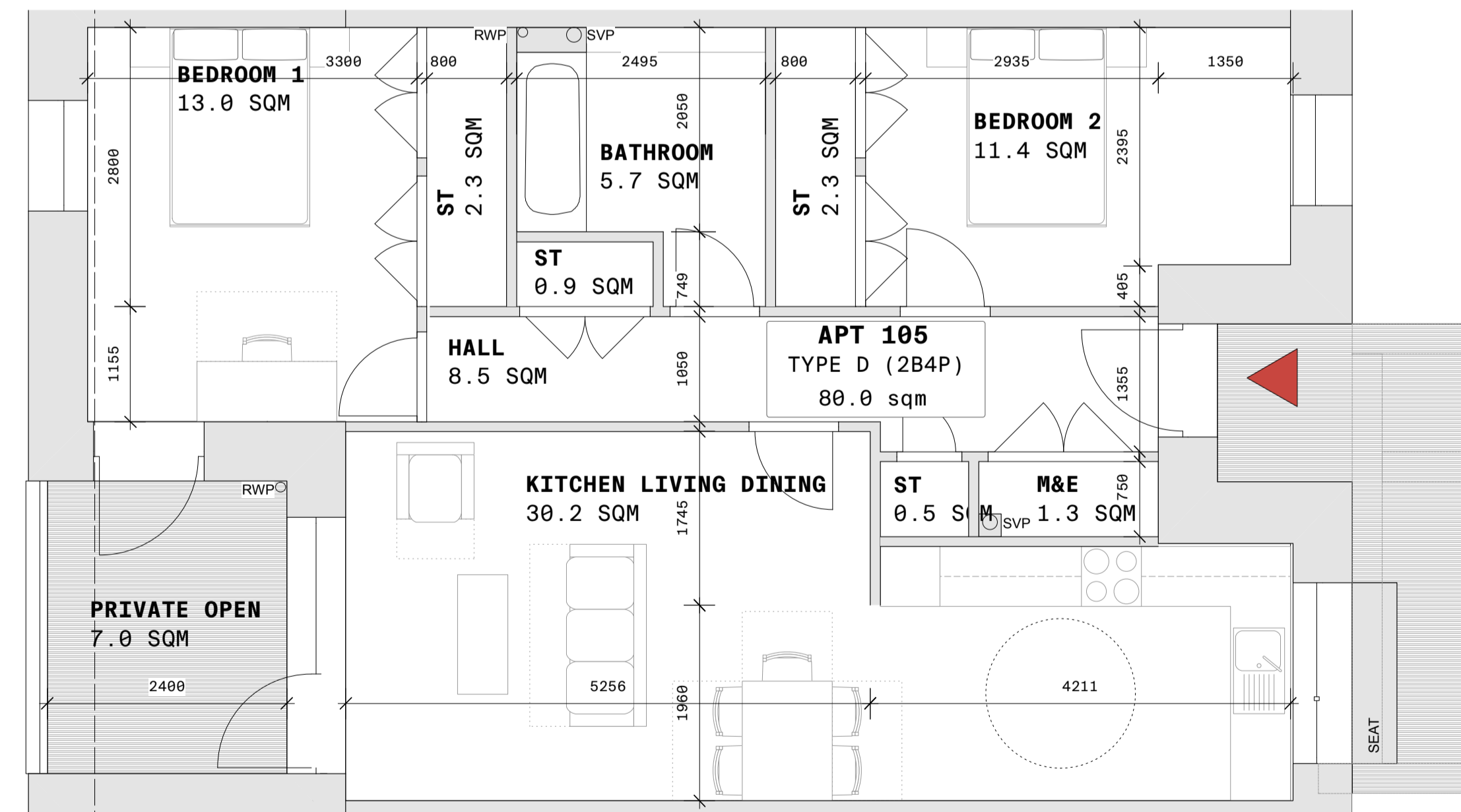


3 UNIT TYPE E - 2B4P Scale: 1:50@A1

APT NO 103
APT NO 203
APT NO 303

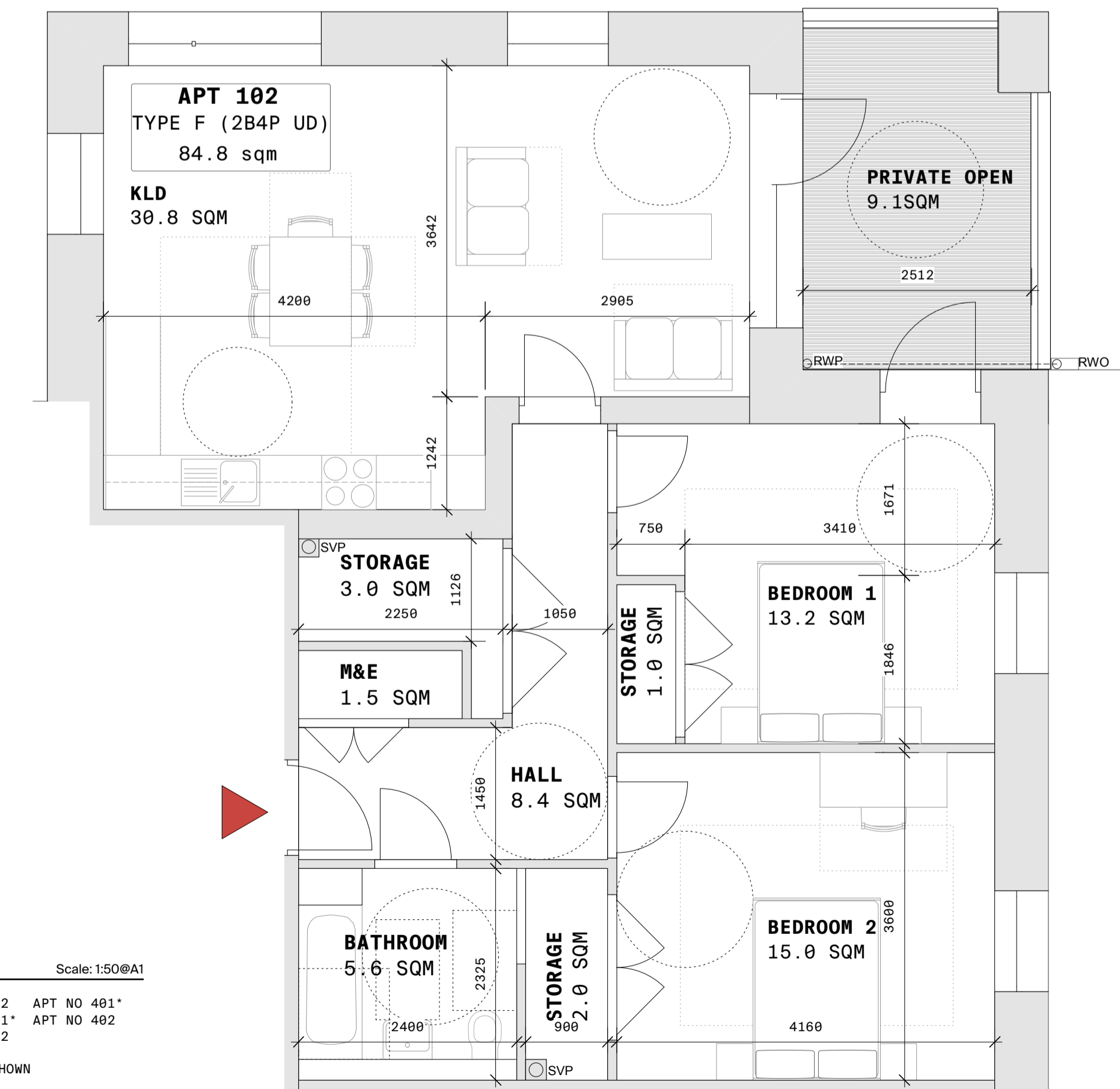
Unit Type	MINIMUM*	TYPE D	TYPE E	TYPE F	COMPLIANT
Unit Description	2B4P	2B4P	2B4P	2B4P	
Universal Design		N	N	Y	
Unit Area	73sqm	79.9sqm	78.1sqm	84.8sqm	Y
Kitchen Living Dining area	30sqm	30.2sqm	30sqm	30.8sqm	Y
width	3.6m	3.7m	6.0m	3.6m	Y
Bedroom 1 area	13sqm	13sqm	13sqm	15sqm	Y
width	2.8m	3.3m	3.3m	3.6m	Y
Bedroom 2 area	11.4sqm/ 13sqm UD	11.4sqm	11.4sqm	13.2sqm	Y
width	2.8m	2.8m	2.9m	3.1m	Y
Storage area	6sqm	6sqm	6sqm	6sqm	Y
Private Amenity area	7sqm	7sqm	8.9sqm	9.1sqm	Y
width	1.5m	2.4m	2.5m	2.5m	Y

* Per Design Standards for New Apartments, Dept of Housing 2022



2 UNIT TYPE D - 2B4P Scale: 1:50@A1

APT NO 104 APT NO 204
APT NO 105 APT NO 205
APT NO 106 APT NO 206



4 UNIT TYPE F - 2B4P Scale: 1:50@A1

APT NO 101* APT NO 202 APT NO 401*
APT NO 102 APT NO 301* APT NO 402
APT NO 201* APT NO 302

* = MIRROR OF LAYOUT SHOWN

GENERAL NOTES: (1) Use figured dimensions only. (2) Do not scale off drawings. (3) Check all dimensions on site. (4) Notify the architect of any discrepancies immediately. (5) Read all drawings in conjunction with the specifications and other contract drawings. (6) If you have received this document in error, please notify mgne architects immediately.

DISCLAIMER: This document is solely for the use of the named Client. It describes a design intent for a specific project. It may be used by the Client when entering into a building contract. All third parties take note that: (1) the drawing has been prepared for a specific reason; (2) the advice on the drawing are not intended for any third parties; (3) third parties must rely on their own independent professional advice; (4) the document expressly does not provide any warranty whatsoever to third parties; and (5) mgne architects expressly disclaims all liability to third parties arising from this document.

rev	date	drawn	review	apprv	notes
-	19.08.2024	MC	BF	RMC	ISSUED FOR PLANNING

project: **Raheen Social Housing**
client: **Limerick CC Council**
job #: **2301**

title: **PROPOSED APT LAYOUTS (SHEET 2)**
number: **RSH-MGNE-XX-PL-DR-A-401**
rev: **Stage 2B**
1:100

mgne architects
23 Mountjoy Sq
Dublin D01 E0F8
mgne.ie