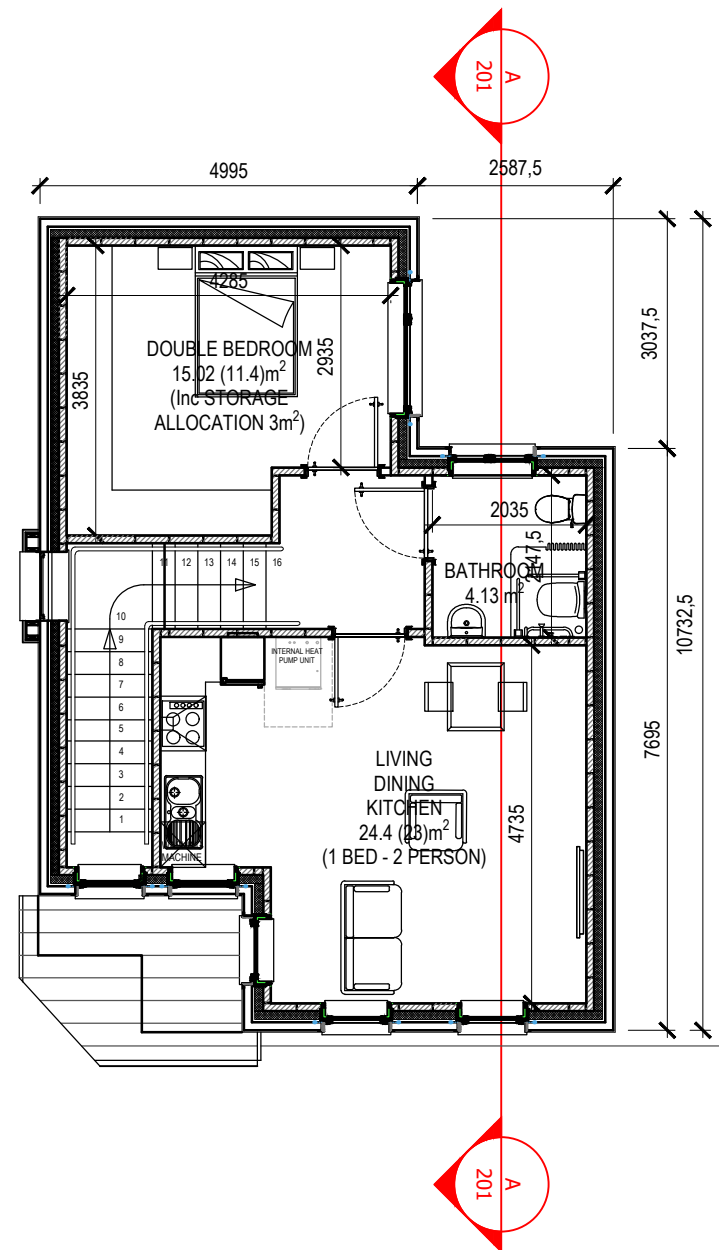


PROPOSED GROUND FLOOR PLAN



PROPOSED FIRST FLOOR PLAN

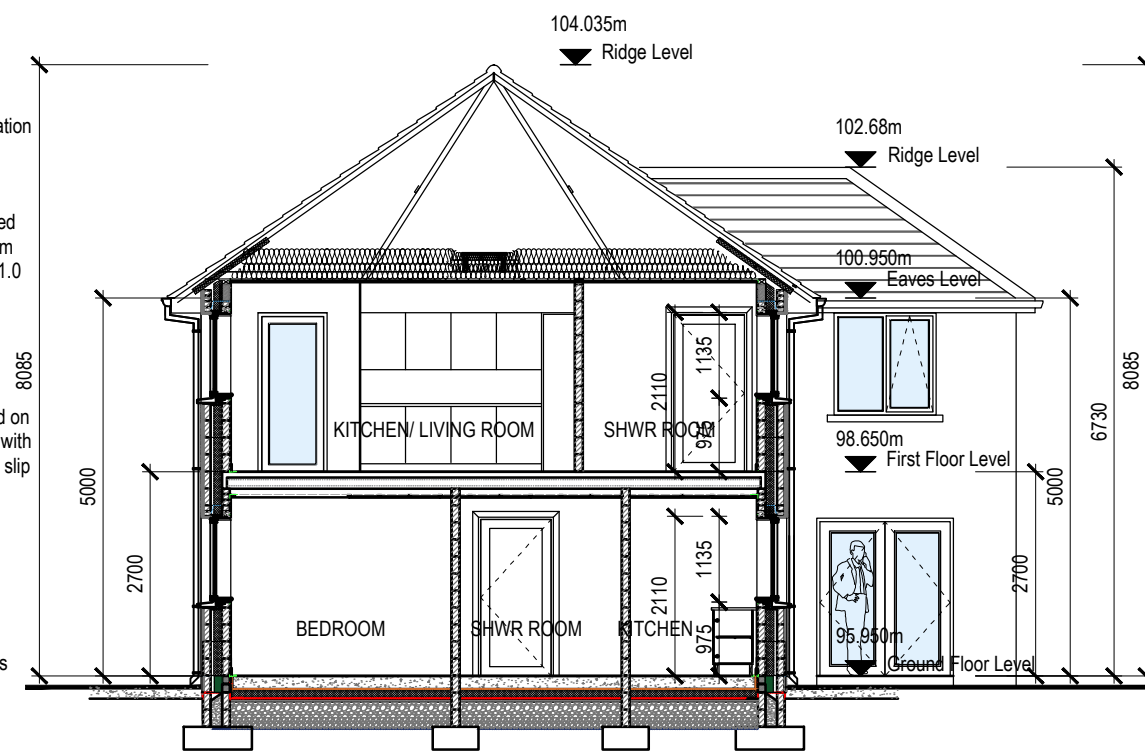
400mm deep Mineral Fibre Attic insulation to achieve the required U-Value 0.16W/m²K.

Selected colour polyester powder coated thermally broken triple glazed aluminium window & door system. U-Value to be 1.0 W/m²K min.

Precast concrete window sill

Floor construction  
150mm thick power floated floor screed on 160mm insulation with edge insulation with min. R-value of 1.0m and polyethylene slip sheet on radon barrier on 50mm fine sand binding on 200mm permeable fill on 340mm hardcore

350mm RC raft foundation to engineers design.



SECTION A-A

Approx. 4 no. P.V. panels per unit.  
To be specified by Mechanical Engineer.

Selected colour concrete flat roof tiles on 35x50mm treated timber battens on breaching membrane on prefabricated roof trusses @ 400mm c/c to engineers design & specification.

New aluminium 120mm half-round gutters & 100mm Downpipes

350mm thick wall construction  
White paint to fine knapp plaster finish on 100mm concrete block external leaf with 110mm cavity wall insulation with 40mm air cavity with 100mm concrete block internal leaf with hardwall plaster finish on scratch and scudded coats with stainless steel twist type wall ties at 750mm c/c horizontally & 450mm c/c vertically with one at every course around window and door opens.

Element should be so designed to ensure a u-value rating exceeding that of 0.16 w/m²k.



SOUTH-EAST ELEVATION

Selected colour concrete flat roof tiles on 35x50mm treated timber battens on breaching membrane on prefabricated roof trusses @ 400mm c/c to engineers design & specification.

New aluminium 120mm half-round gutters & 100mm Downpipes

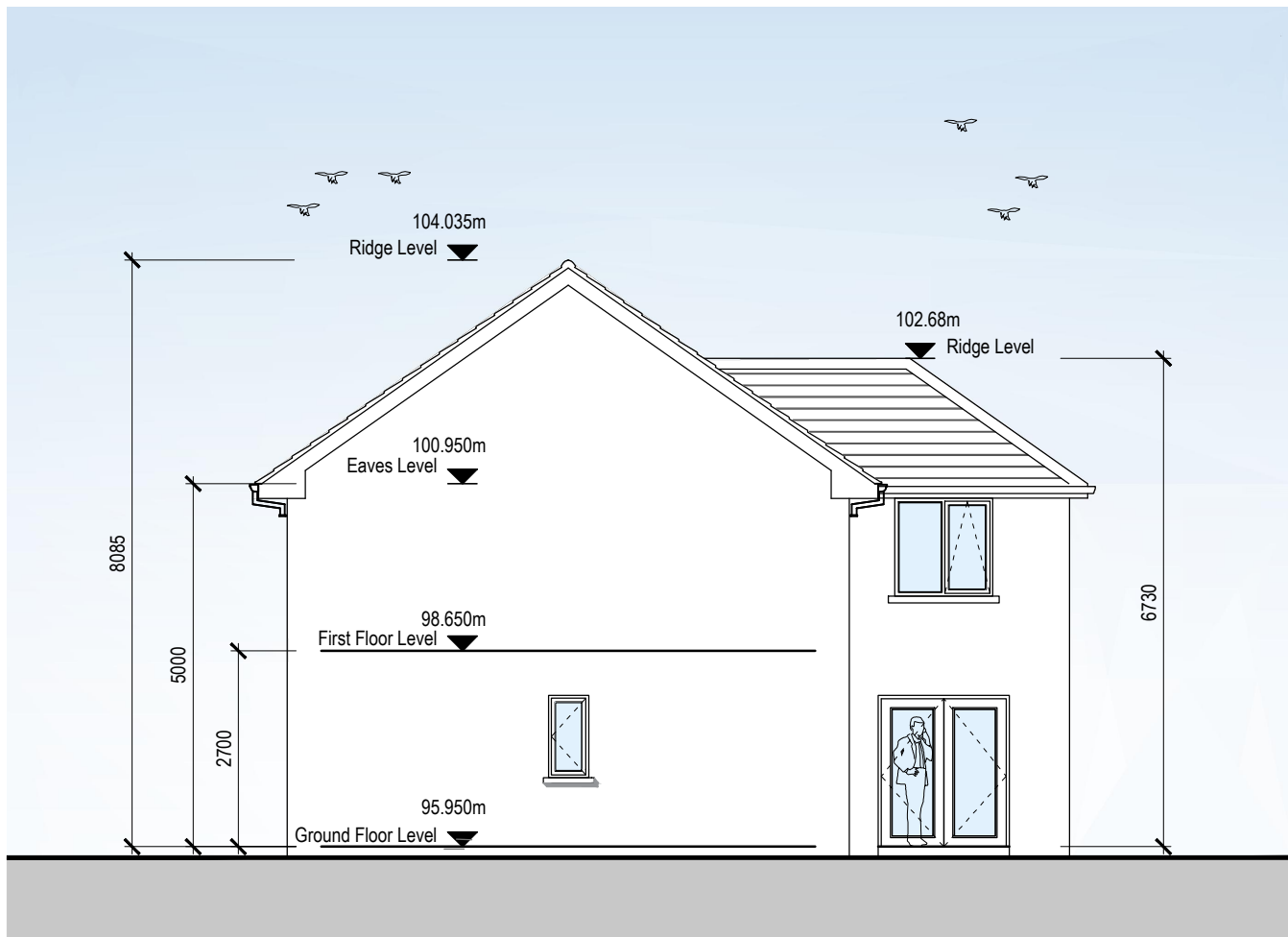
Selected colour polyester powder coated thermally broken triple glazed aluminium window & door system.  
U-Value to be 1.0 W/m²K min.

Precast concrete window sill

White paint to fine knapp plaster finish.

Elevation Box out in Selected Colour Standing Seam Aluminium cladding panels finish.

Selected Stone Finish.



SOUTH-WEST ELEVATION

UNIT 8 - 1 BED / 2 PERSON (Apartment)		
	Required:	Achieved:
Total area	45.0m²	52.52m²
Agg. Living	23m²	23.4m²
Storage	3m²	3.21m²

Room:	Req:	Achieved:
Living	23m²	23.4m²
Kitchen / Dining	-	-
Bedroom 1	11.4m²	11.44m²
Private Open Space	5m²	6m²

UNIT 9 - 1 BED / 2 PERSON (Apartment)		
	Required:	Achieved:
Total area	45.0m²	56.20m²
Agg. Living	23m²	24.40m²
Storage	3m²	3.0m²

Room:	Req:	Achieved:
Living	23m²	24.40m²
Kitchen / Dining	-	-
Bedroom 1	11.4m²	12.02m²
Private Open Space	5m²	5.00m²



NORTH-WEST ELEVATION

Selected colour concrete flat roof tiles on 35x50mm treated timber battens on breaching membrane on prefabricated roof trusses @ 400mm c/c to engineers design & specification.

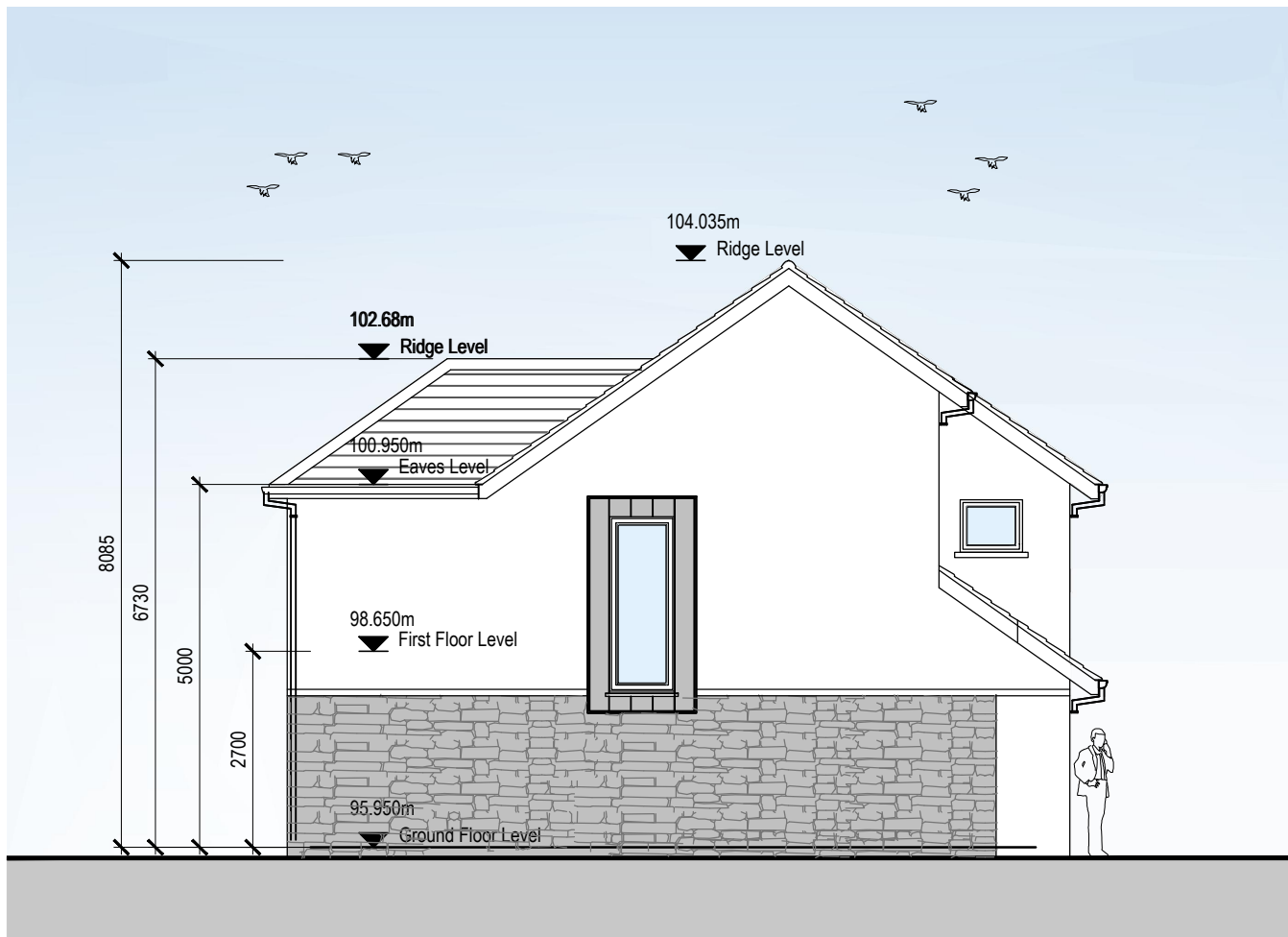
New aluminium 120mm half-round gutters & 100mm Downpipes

Selected colour polyester powder coated thermally broken triple glazed aluminium window & door system.  
U-Value to be 1.0 W/m²K min.

Precast concrete window sill

White paint to fine knapp plaster finish.

Elevation Box out in Selected Colour Standing Seam Aluminium cladding panels finish.



NORTH-EAST ELEVATION