



Leitrim County Council

Planning & Development Acts 2000 (as amended)

PART XI

Planning & Development Regulations 2001 (as amended)

PART 8

Planning Register Ref. No. 24-C-005

CHURCHFIELD, DRUMLEASE ROAD, DROMAHAIR,

ACTIVE TRAVEL SCHEME

MAY 2024

1.0 Introduction and Scheme Overview

Leitrim County Council is proposing to provide a new footpath along the L-4165 together with improvements to the junction of the L-4165 and L-8165 (Churchfield Estate Road) and the junction of the L-4165 and the L-4166 in order to enhance the safety of pedestrians commuting to the town of Dromahair and Drumlease National School. The proposed development also seeks to reduce the speed of the vehicular traffic on the Drumlease Road at this location. The site location is outlined in red on the site location map below.

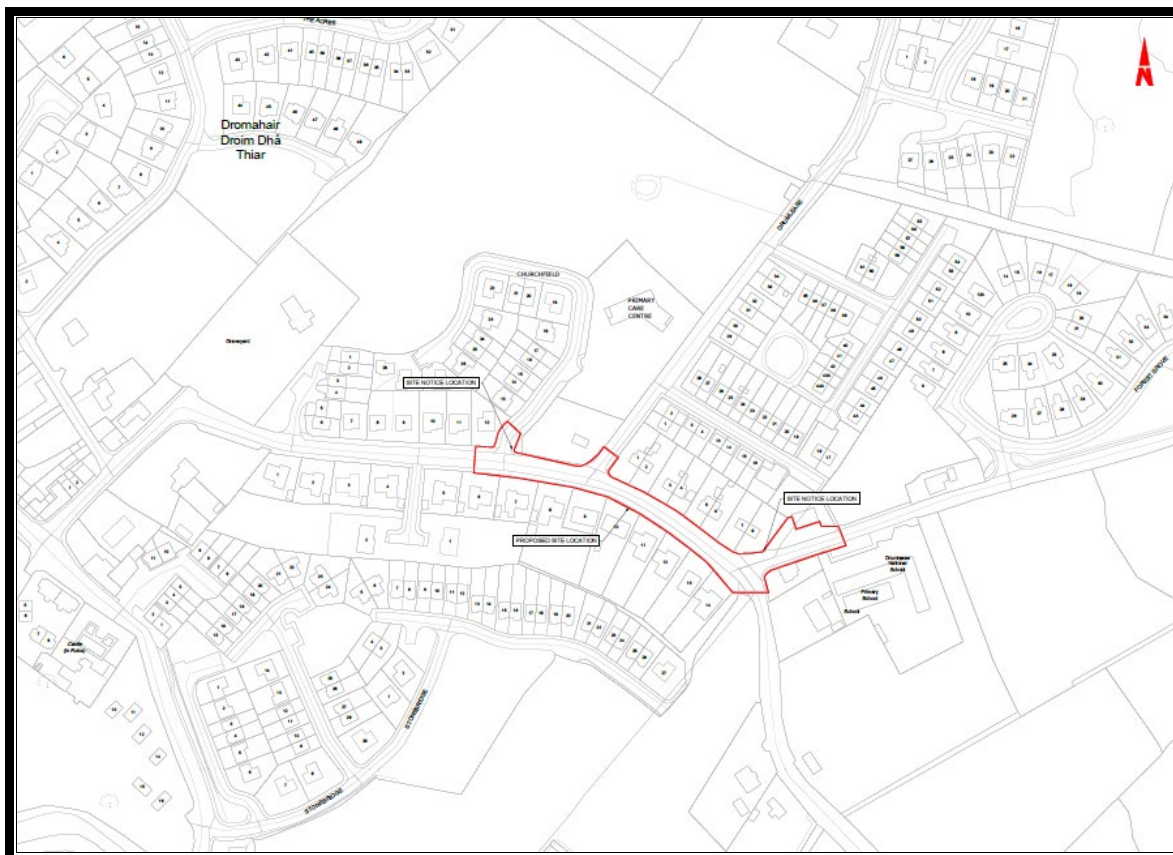


Figure 1 Location of Proposed Development

2.0 Public Consultation Process

The project was formally advertised for public consultation between Friday 22nd March to Friday 19th April 2024. Details of the proposed works were available for inspection during normal office hours at the office of the Planning Authority and also on the Council website. The closing date for submissions was 7th May 2024.

2.1 Submissions/Observations and Responses

No submissions or observations have been received.

2.2 Internal & External Bodies

The proposal was referred to the following internal sections:

- District Engineer
- Road Design
- Water Services
- Access Officer
- Environment

2.3 Summary of Issues Raised and Responses

District Engineer comment received and noted (25th April 2024)

- No objection.

Access Officer comment received and noted (1st May 2024)

- No objection subject to it satisfying standard planning assessment criteria.

3.0 Assessment

The proposed development will consist of the construction of a 2-metre-wide footpath along the northern side of the L-4165 extending for approximately 210 metres, together with improvements to the junction of the L-4165 and L-8165 (Churchfield Estate Road) and the junction of the L-4165 and the L-4166 and the upgrade of the existing public lighting with associated surface water drainage. As outlined in the Briefing Report, Leitrim County Council has a number of policies and objectives set out in the County Development Plan 2023-2029 which supports the provision of footpaths and lighting for all towns and villages in the County.

WC POL 1 - To promote walking and cycling as efficient, healthy and environmentally friendly modes of transport by securing the development of a network of direct, comfortable, convenient and safe cycle routes and footpaths, particularly in town centres and in the vicinity of schools.

WC POL 2 - To work with all relevant stakeholders to seek to ensure a significant increase in walking in Co. Leitrim, by emphasising the quality of the pedestrian and street environment, promoting simplified streetscapes and ensuring access for all.

WC POL 3 - To design pedestrian and cycling infrastructure in accordance with the principles, approaches and standards set out in the National Cycle Manual, the Design Manual for Urban Roads and Streets and international best practice.

WC POL - 4 To require that consideration be given to sustainable transport movement at the earliest design stage of development proposals, to ensure accessibility by all modes of transport and all sections of society and promote the provision of parking space for bicycles in development schemes.

WC OBJ 3 - To improve the streetscape environment for pedestrians, cyclists, and people with special mobility needs by providing facilities to enhance safety and convenience, including separation for pedestrian infrastructure from vehicular traffic.

DMR 22 - Maintain and enhance accessibility to and within the town centre in respect of pedestrian and cycle access, public transport and car parking, with particular regard to the needs and access for people with disabilities.

DMR 25 - Advance the provision of footpath and public lighting in the town to ensure that all multiple housing developments are connected to the town centre.

DMR 27 - Provide a footpath including enhanced public lighting linking Churchfield and Forest Grove housing estates to the town centre and to Drumlease National School.

In light of the above specific policies and objective, and to the general support in the Leitrim County Development Plan 2023-2029 relating to improvement of, and the provision of, safe pedestrian footpaths and to encourage safe walking, it is considered that the proposed development is consistent with the proper planning and sustainable development of the area and is appropriate to the area.

3.1 Appropriate Assessment

Natura 2000 sites are protected habitats for flora and fauna of European importance. They comprise Special Areas of Conservation (SACs), designated under the Habitats Directive and Special Protection Areas (SPAs), designated under the Birds Directive.

The proposal documentation is accompanied by an Appropriate Assessment Screening Report prepared by Coiscéim Consulting. The submitted AA Screening Report has been prepared in line with best practice guidance and provides a description of the proposed development and an identification of the European sites within a possible Zone of Influence determined through the Source-Pathway-Receptor model.

The conclusion of the AA Screening Report is as follows:

“Based on the above assessment it is concluded that there will not be any significant adverse effect on any Natura 2000 site as a result of the proposed works.

The potential impacts associated with the proposed development do not have any potential to affect the receiving environment and, consequently will not affect the conservation objectives supporting the qualifying interest/special conservation interests of the following European sites... Therefore, an Appropriate Assessment is not required to fully assess the nature of these effects and to propose mitigation to avoid and /reduce those effects on the European sites”.

Leitrim County Council, as competent authority, in accordance with Article 6(3) of the EU Habitats Directive (Directive 92/43/EEC) and Regulation 42 (1) of the European Communities (Birds and Natural Habitats) Regulations 2011, as amended, has undertaken an Appropriate Assessment Screening on the proposed development.

The Appropriate Assessment Screening Report has assessed, in view of the best scientific knowledge and the conservation objectives of European Sites, if the proposed works, individually, and in combination with other plans and projects, are likely to have a significant effect on any European site (known as a Natura 2000 site). This report concluded that the works individually, and in combination with other plans and projects, are not likely to have a significant effect on any European site.

In accordance with Article 6(3) of the EU Habitats Directive (Directive 92/43/EEC) and Regulation 42 (1) of the European Communities (Birds and Natural Habitats) Regulations 2011, as amended, Leitrim County Council made a determination that Appropriate Assessment is not required for the proposed development.

3.2 Environmental Impact Assessment

Leitrim County Council, in accordance with the requirements of EIA Directive (Directive 2011/92/EU as amended by 2014/52/EU; the Planning and Development Act 2000, as amended; the Planning and Development Regulations 2001, as amended; and the European Union (Planning and Development) (Environmental Impact Assessment) Regulations 2018, undertook an Environmental Impact Assessment Screening in respect of the proposed development.

Leitrim County Council determined that the proposed scheme would not be likely to have any significant effects on the environment and, accordingly, that the preparation and submission of an Environmental Impact Assessment Report was not required.

4.0 Recommendation

On the basis of the reports which were prepared and formed part of the Part 8 public consultation exercise, the Planning Authority is satisfied that the proposed development adheres to, and is consistent with, the policy framework contained within the statutory Leitrim County Development Plan 2023-2029. The Planning Authority is equally satisfied that the proposed works will not adversely impact upon the

local receiving environment and that the development would accord with the proper planning and sustainable development of the area.

The conclusion of this assessment is that the County Development Plan is fully supportive of providing the proposed footpath, public lighting, and associated works. The Planning Authority supports the principle of the proposed development which accords with the stated policy framework contained in the Leitrim County Development Plan.

Section 179(3) of the Planning and Development Act 2000, as amended, requires the preparation of a report by the Chief Executive of the Local Authority following the placing of the Part 8 application on public display. This report shall culminate in a recommendation *whether or not the proposed development should be proceeded with as proposed, or as varied or modified as recommended in the report or should not be proceeded with, as the case may be.*

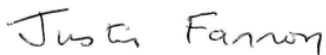
It is recommended that the proposed development proceed with as proposed subject to the inclusion of the attached recommended conditions in Appendix 1.



Joseph Duffy
Assistant Planner
08th May 2024



Liam Flynn
A/Senior Executive Planner
08/05/2024



Justin Fannon
Acting Director of Services
08/05/2024

Appendix 1 Schedule of Conditions

1. The development shall be executed generally in accordance with plans, particulars, details and specifications lodged as part of the Part 8 public consultation documentation, save, as is herein under otherwise required or as agreed in writing with the Planning Department prior to the commencement of development.

2. All excavated material shall be disposed of in a proper and environmentally friendly manner. Where appropriate, i.e., if works are being undertaken by an outside contractor, licenses for these works shall be obtained prior to commencement. Details of, and locations of, landfills or sites to be utilised for the disposition of excavated material, shall be submitted to, and agreed in writing, with the Planning Department, following consultation with the Environment Department of Leitrim County Council.

3. All works are to comply with the guidance contained in Book 1 of Building for Everyone: A Universal Design Approach, published by the National Disability Authority.