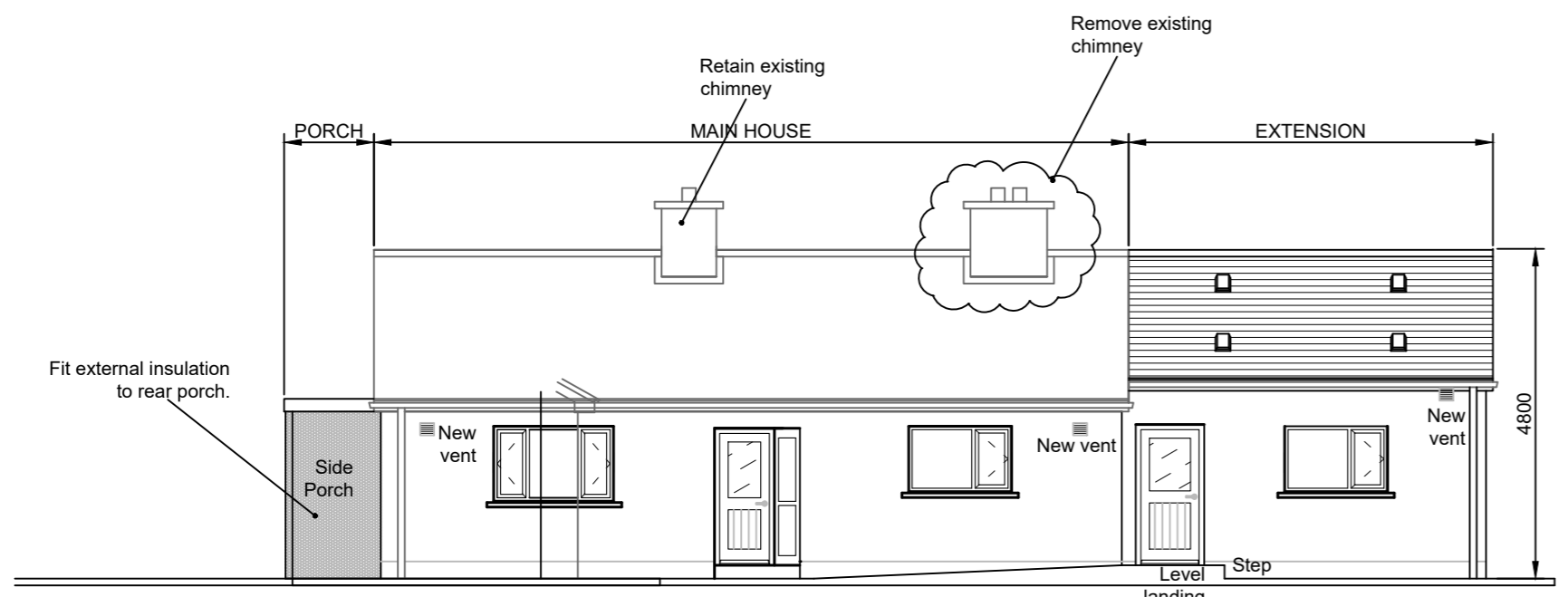
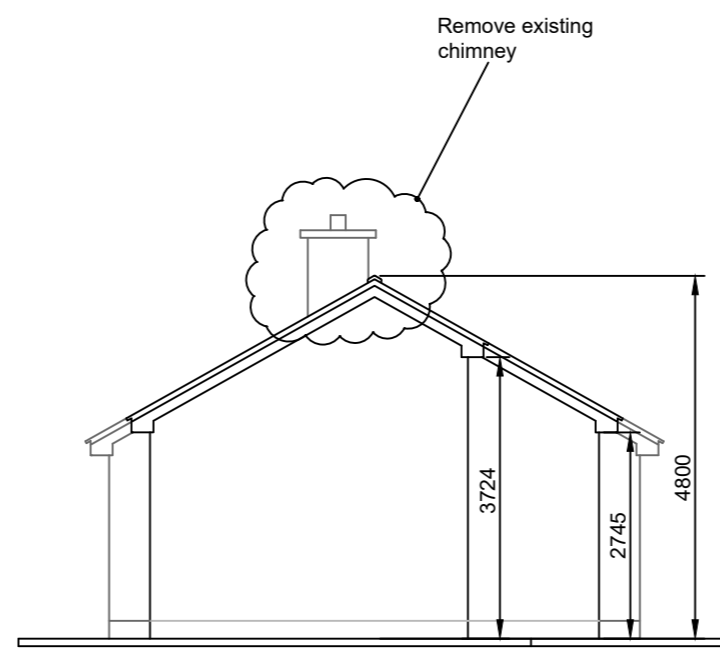


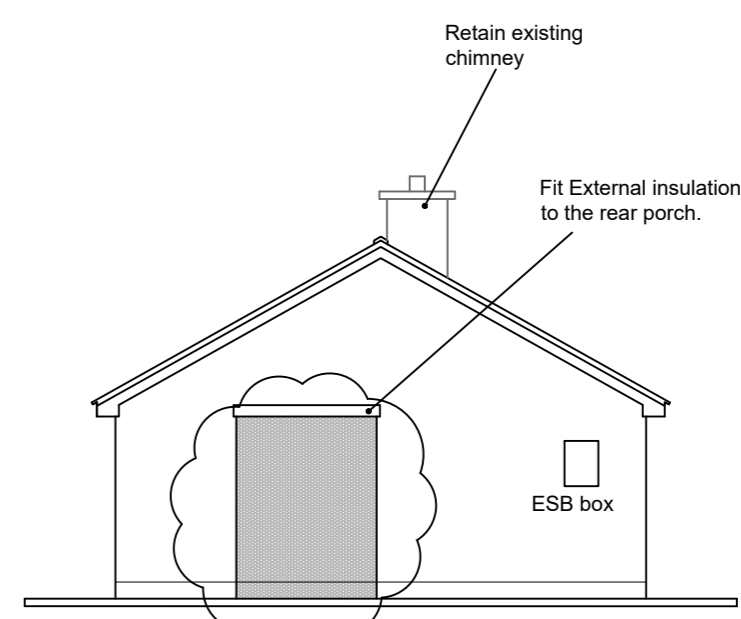
**PROPOSED FLOOR LAYOUT AND ELEVATIONS**



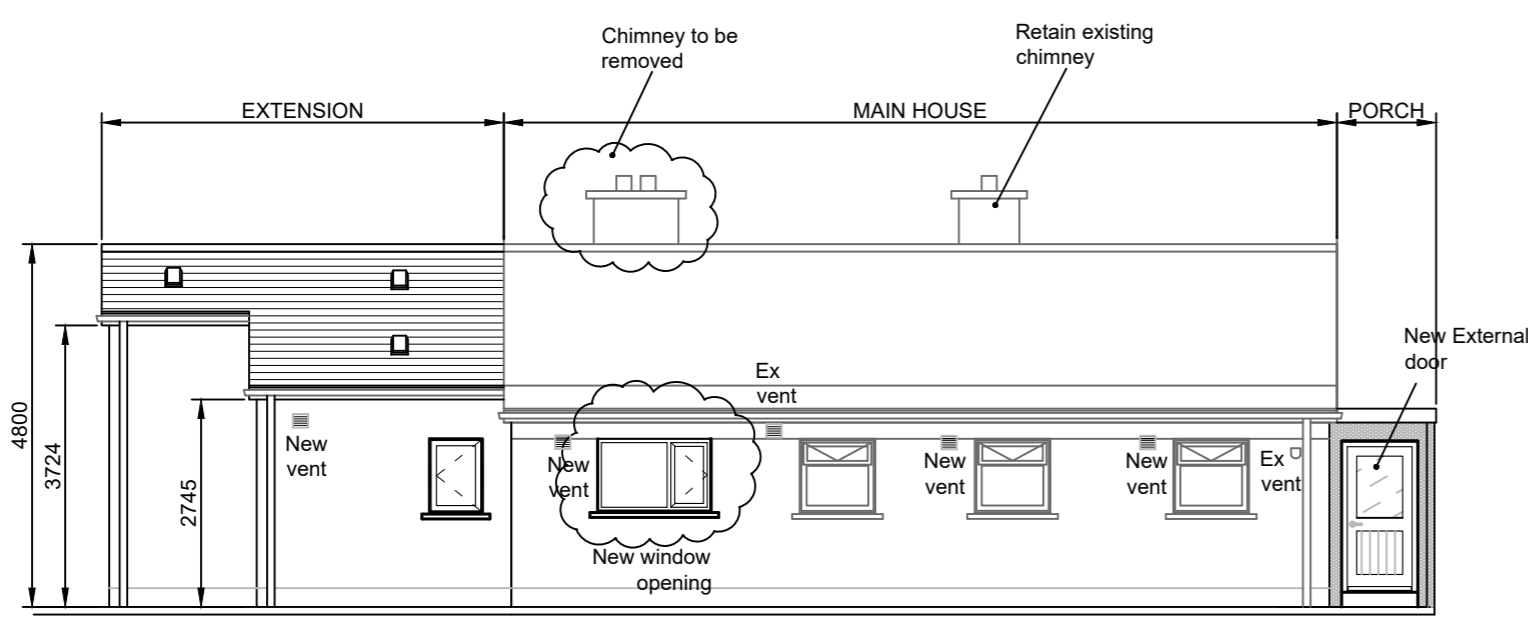
PROPOSED FRONT ELEVATION



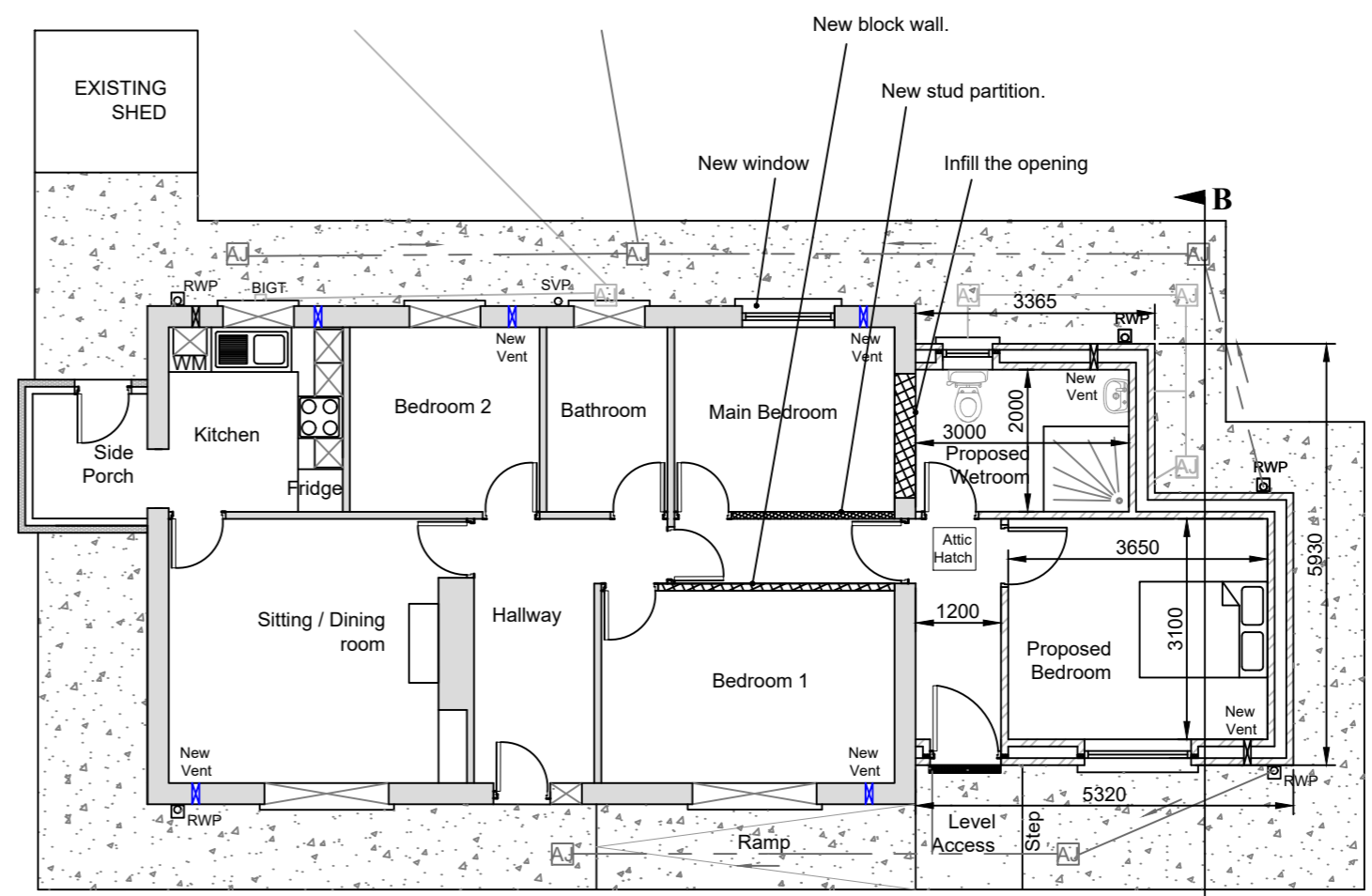
PROPOSED SIDE ELEVATION



PROPOSED SIDE ELEVATION



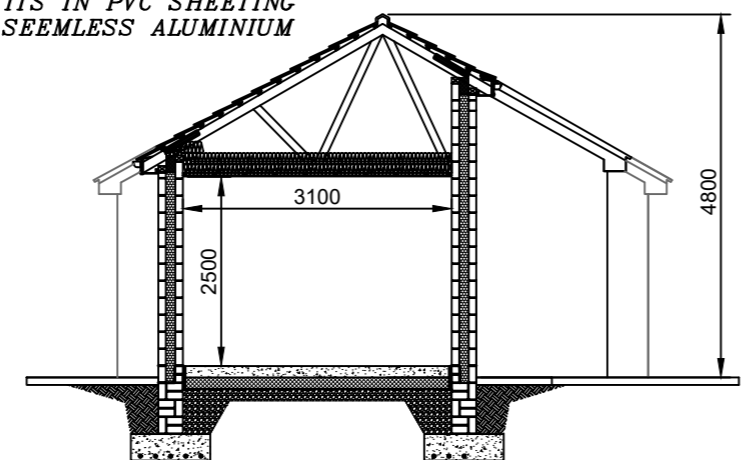
PROPOSED REAR ELEVATION



PROPOSED FLOOR LAYOUT



SELECTED FIBER CEMENT SLATES ON BATTENS ON FELT ON  
 125 X 50MM RAFTERS @ 400mm C/C  
 RIDGE BOARD 175 X 25 mm  
 PURLINS 175 X 75mm STRUTS 150 X 75mm  
 COLLARS 125 X 50mm EVERY 4th RAFTER  
 RUNNERS 75 X 50mm  
 WALL PLATES ON OUTER & INNER WALL LEAFS 100 X 75mm  
 FACIAS IN uPVC  
 SOFFITS IN PVC SHEETING  
 GUTTERS IN OCEE SEEMLESS ALUMINIUM



SECTION B-B

CAVITY TO BE CLOSED AS PER DETAIL AS SHOWN ON STANDARD DETAILS SHEET  
DETAILS OF AIRTIGHT MEASURES TO WINDOWS, EXTERNAL DOORS AND THE CEILING AS SHOWN ON STANDARD DETAILS SHEET

150mm THICK FLOOR SLAB IN 30N20 CONCRETE WITH POWERFLOAT FINISH ON 150mm AEROBORD PLATINUM (O.S.A.) FLOOR INSULATION ON 'MONARFLEX' (O.S.A.) RADON BARRIER ON 20mm LAYER BLINDING FINES MATERIAL ON MINIMUM 200mm THICK COMPACTED HARDCORE (AS DESCRIBED ON STANDARD DETAILS SHEET NO. 3) ON SUBSTRATE TRIMMED TO FIRM SURFACE AND DEVOID OF ALL ORGANIC MATTER

REVISION	NO.	DATE	BY
<p>Comhairle Contae Thiobraid Árann Tipperary County Council</p>			
<p><b>HOUSING SECTION</b>                  CIVIC OFFICES, LIMERICK ROAD, NENAGH, CO. TIPPERARY</p> <p>S.CARR DIRECTOR OF HOUSING</p> <p>J. COONEY SENIOR ENGINEER</p>			
<p>DRAWING TITLE: PART 8 - EXTENSION, REFURBISHMENT WORKS, TEMPORARY PLACEMENT OF MOBILE HOME AND RETENTION OF 2 SHEDS AT ROCKFOREST, KNOCK, ROSCREA - PROPOSED FLOOR LAYOUT AND ELEVATIONS</p>			
<p>DRAWN BY: MOC OCT, 2022</p>	<p>CHECKED BY: EW OCT, 2022</p>	<p>SCALE: A2 @ 1:100</p>	<p>DWG No: RF - P8 - 05</p>