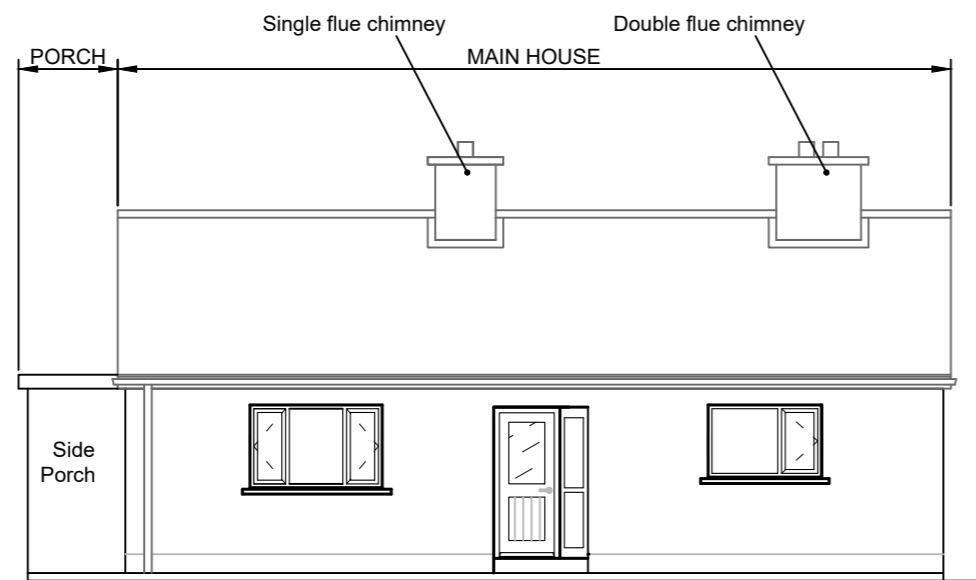
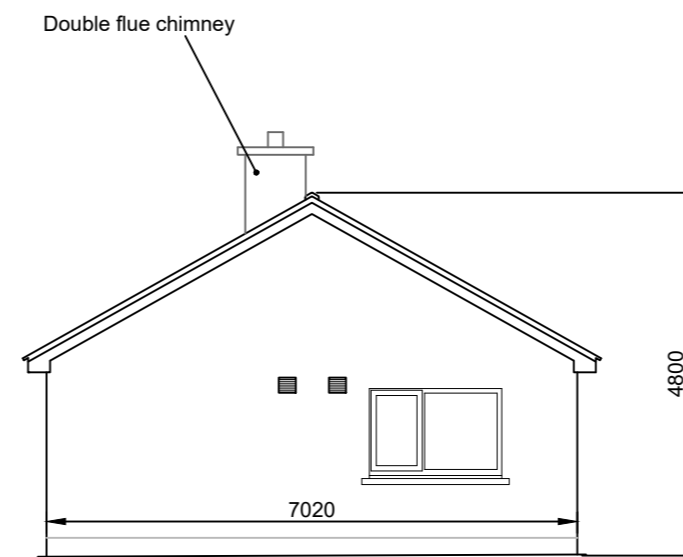


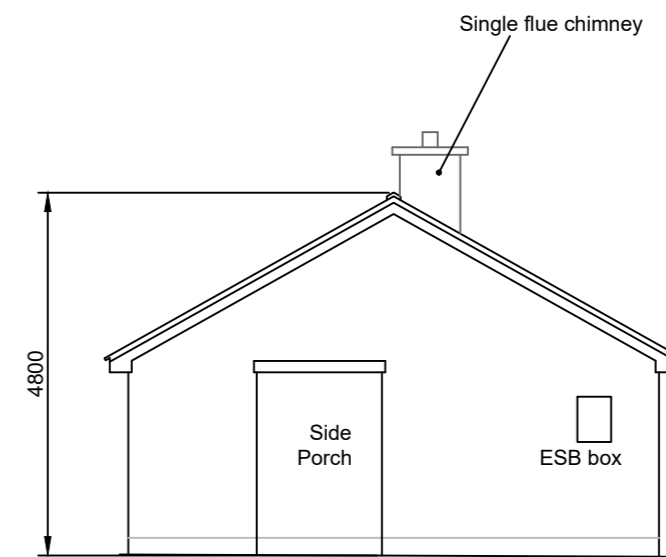
EXISTING FLOOR LAYOUT, ELEVATIONS AND SECTION



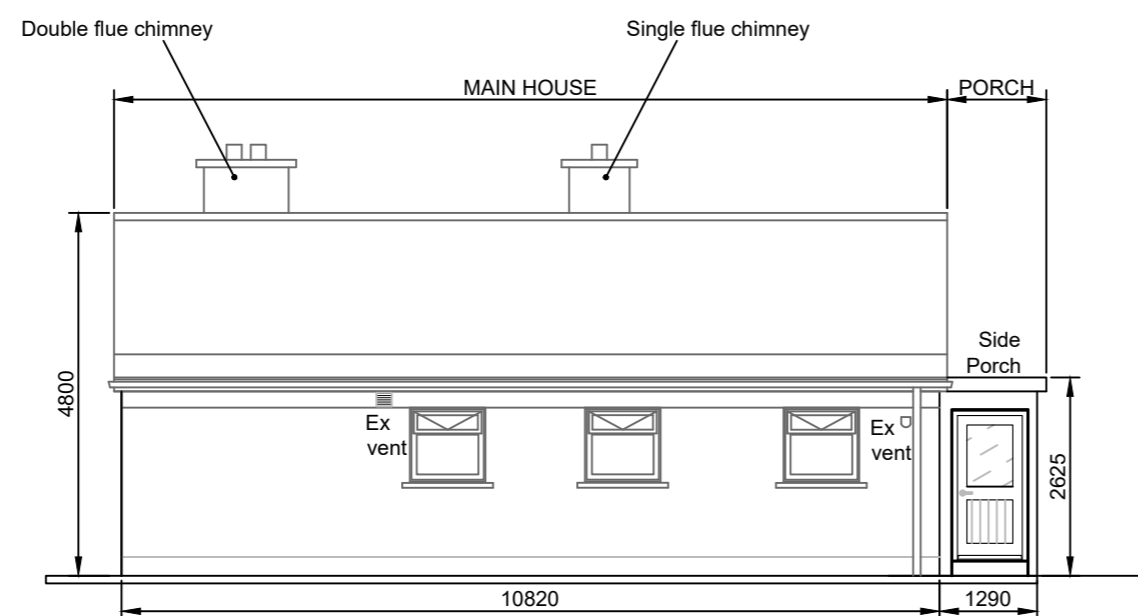
EXISTING FRONT ELEVATION



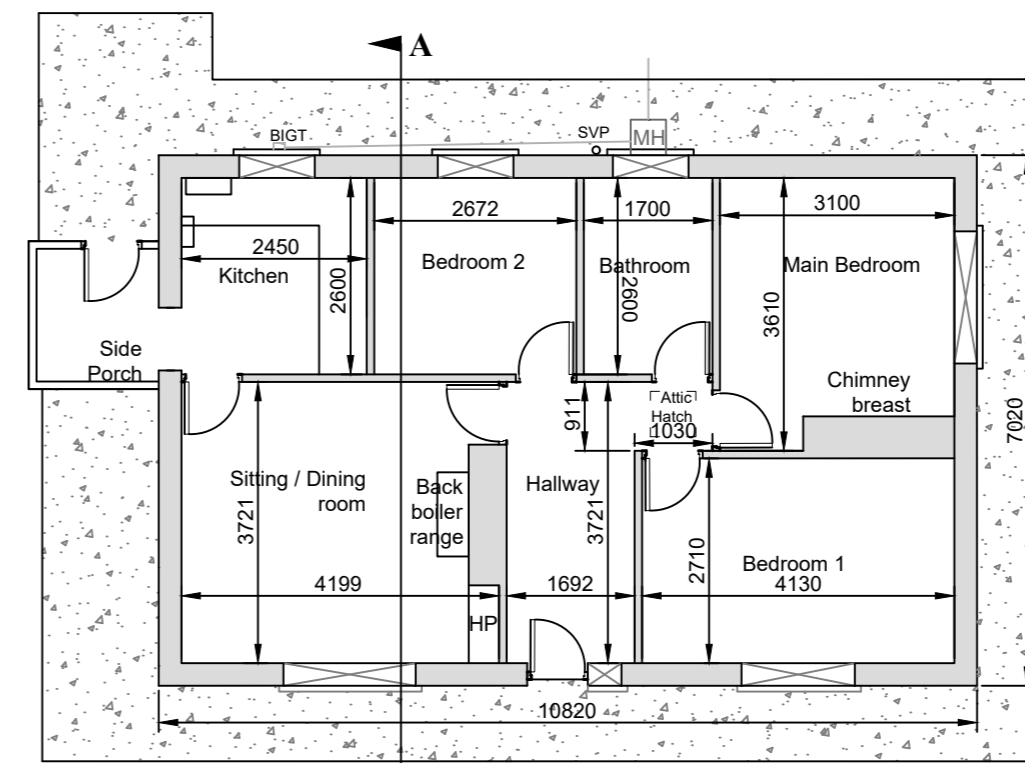
EXISTING SIDE ELEVATION



EXISTING SIDE ELEVATION

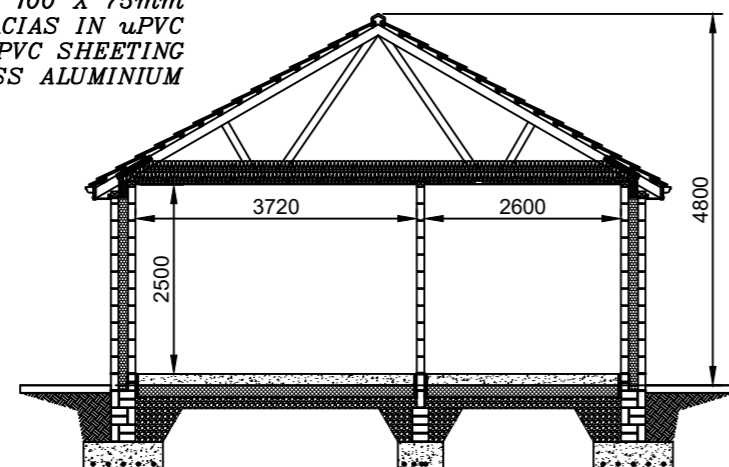


EXISTING REAR ELEVATION



EXISTING FLOOR LAYOUT

SELECTED FIBER CEMENT SLATES ON BATTENS ON FELT ON
 125 X 50MM RAFTERS @ 400mm C/C
 RIDGE BOARD 175 X 25 mm
 PURLINS 175 X 75mm STRUTS 150 X 75mm
 COLLARS 125 X 50mm EVERY 4th RAFTER
 RUNNERS 75 X 50mm
 WALL PLATES ON OUTER & INNER WALL LEAFS 100 X 75mm
 FACIAS IN uPVC
 SOFFITS IN PVC SHEETING
 CUTTERS IN OCEE SEEMLESS ALUMINIUM



SECTION A-A

CAVITY TO BE CLOSED AS PER DETAIL AS SHOWN ON STANDARD DETAILS SHEET

DETAILS OF AIRTIGHT MEASURES TO WINDOWS, EXTERNAL DOORS AND THE CEILING AS SHOWN ON STANDARD DETAILS SHEET

150mm THICK FLOOR SLAB IN 30N20 CONCRETE WITH POWERFLOAT FINISH ON 150mm AEROBORD PLATINUM (O.S.A.) FLOOR INSULATION ON 'MONARFLEX' (O.S.A.) RADON BARRIER ON 20mm LAYER BLINDING FINES MATERIAL ON MINIMUM 200mm THICK COMPACTED HARDCORE (AS DESCRIBED ON STANDARD DETAILS SHEET NO. 3) ON SUBSTRATE TRIMMED TO FIRM SURFACE AND DEVOID OF ALL ORGANIC MATTER

REVISION	NO.	DATE	BY
HOUSING SECTION CIVIC OFFICES, LIMERICK ROAD, NENAGH, CO. TIPPERARY S. CARR DIRECTOR OF HOUSING J. COONEY SENIOR ENGINEER			
DRAWING TITLE: PART 8 - EXTENSION, REFURBISHMENT WORKS, TEMPORARY PLACEMENT OF MOBILE HOME AND RETENTION OF 2 SHEDS AT ROCKFOREST, KNOCK, ROSCREA - EXISTING FLOOR LAYOUT, ELEVATIONS AND SECTION			
DRAWN BY: MOC OCT, 2022	CHECKED BY: EW OCT, 2022	SCALE: A2 @ 1:100	DWG No: RF - P8 - 04