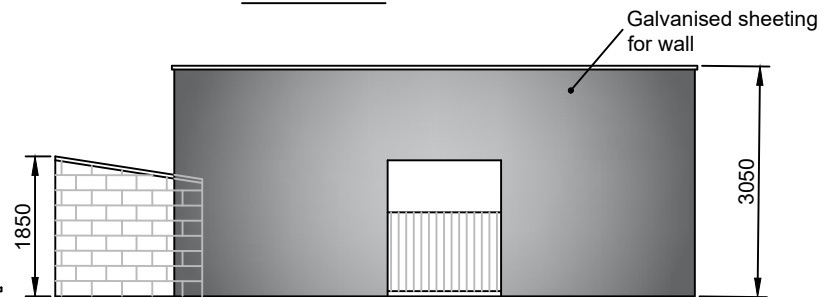
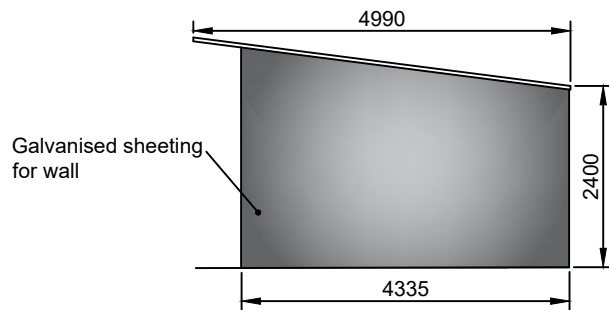


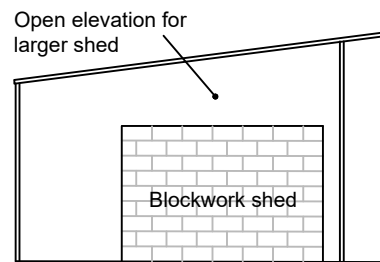
VIEW 'A'



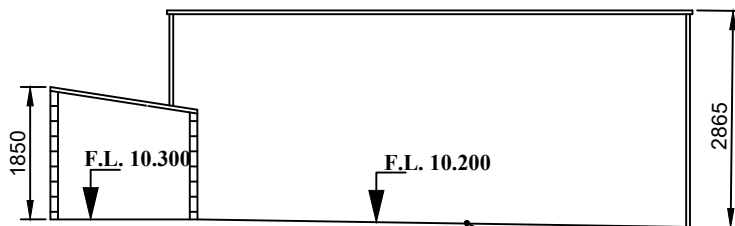
VIEW 'B'



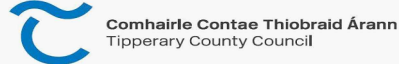
VIEW 'C'



VIEW 'D'



Section C-C

REVISION	NO.	DATE	BY
			
HOUSING SECTION CIVIC OFFICES, LIMERICK ROAD, NENAGH, CO. TIPPERARY S. CARR DIRECTOR OF HOUSING			
J. COONEY SENIOR ENGINEER			
DRAWING TITLE: PART 8 - EXTENSION, REFURBISHMENT WORKS, TEMPORARY PLACEMENT OF MOBILE HOME AND RETENTION OF 2 SHEDS AT ROCKFOREST, KNOCK, ROSCREA - EXISTING SHEDS TO RETAINED			
DRAWN BY: MOC OCT, 2022	CHECKED BY: EW OCT, 2022	SCALE: 1:100 @A4	DWG No. RF - P8 - 07