



TRIAL PIT RECORD

REPORT NUMBER

24665

CONTRACT Monaghan Active Travel

TRIAL PIT NO. TP13

SHEET Sheet 1 of 1

LOGGED BY I.Redder

CO-ORDINATES 667,464.88 E
833,929.00 N

DATE STARTED 04/05/2023

DATE COMPLETED 04/05/2023

CLIENT Monaghan Co.Co.
ENGINEER DBFL/Cora

GROUND LEVEL (m) 83.28

EXCAVATION METHOD 3T Tracked machine

	Geotechnical Description	Legend	Depth (m)	Elevation	Water Strike	Samples			Vane Test (KPa)	Hand Penetrometer (KPa)
						Sample Ref	Type	Depth		
0.0	TOPSOIL		0.20	83.08		AA205173	B	0.60		
	Soft, brown, slightly sandy slightly gravelly CLAY with hair roots content. Sand is fine to coarse, gravel is fine to coarse subangular to subrounded.		0.50	82.78						
	Firm to stiff, greyish brown, slightly sandy slightly gravelly CLAY with low cobbles and boulders content. Sand is fine to coarse, gravel is fine to coarse subangular to subrounded, cobbles and boulders are subangular to subrounded.									
1.0	TP terminated at 1.4m due to many boulders End of Trial Pit at 1.40m		1.40	81.88		AA205174	B	1.40		
2.0										
3.0										
4.0										

Groundwater Conditions

TP dry

Stability

TP stable

General Remarks

TP done for civic offices project



TRIAL PIT RECORD

REPORT NUMBER

24665

CONTRACT Monaghan Active Travel

TRIAL PIT NO. TP14

SHEET Sheet 1 of 1

LOGGED BY I.Reder

CO-ORDINATES 667,490.90 E
833,949.34 N

DATE STARTED 04/05/2023

DATE COMPLETED 04/05/2023

CLIENT Monaghan Co.Co.

ENGINEER DBFL/Cora

GROUND LEVEL (m) 80.90

EXCAVATION METHOD 3T Tracked machine

	Geotechnical Description	Legend	Depth (m)	Elevation	Water Strike	Samples			Vane Test (KPa)	Hand Penetrometer (KPa)
						Sample Ref	Type	Depth		
0.0	TOPSOIL									
	Soft to firm, brown, slightly sandy slightly slightly gravelly CLAY with hair roots content. Sand is fine to coarse, gravel is fine to coarse subangular to subrounded.		0.20	80.70						
	Firm to stiff, greyish brown, slightly sandy gravelly CLAY with low cobbles and low boulders content. Sand is fine to coarse, gravel is fine to coarse subangular to subrounded, cobbles and boulders are subangular to subrounded.		0.50	80.40		AA205175	B	0.70		
1.0										
						AA205176	B	1.50		
2.0										
	TP terminated at 2.1m due to many boulders End of Trial Pit at 2.10m		2.10	78.80		AA105177	B	2.10		
3.0										
4.0										

Groundwater Conditions

TP dry

Stability

TP stable

General Remarks

TP done for civic offices project

Project Number: 24665
Site: Monaghan Active Travel
Project Engineer: DBFL/CORA



TRIAL PIT PHOTOGRAPHY RECORD
TP 01



TP 01 – spoil



Project Number: 24665
Site: Monaghan Active Travel
Project Engineer: DBFL/CORA



TRIAL PIT PHOTOGRAPHY RECORD
TP 02



TP 02 – spoil



Project Number: 24665
Site: Monaghan Active Travel
Project Engineer: DBFL/CORA



TRIAL PIT PHOTOGRAPHY RECORD
TP 03



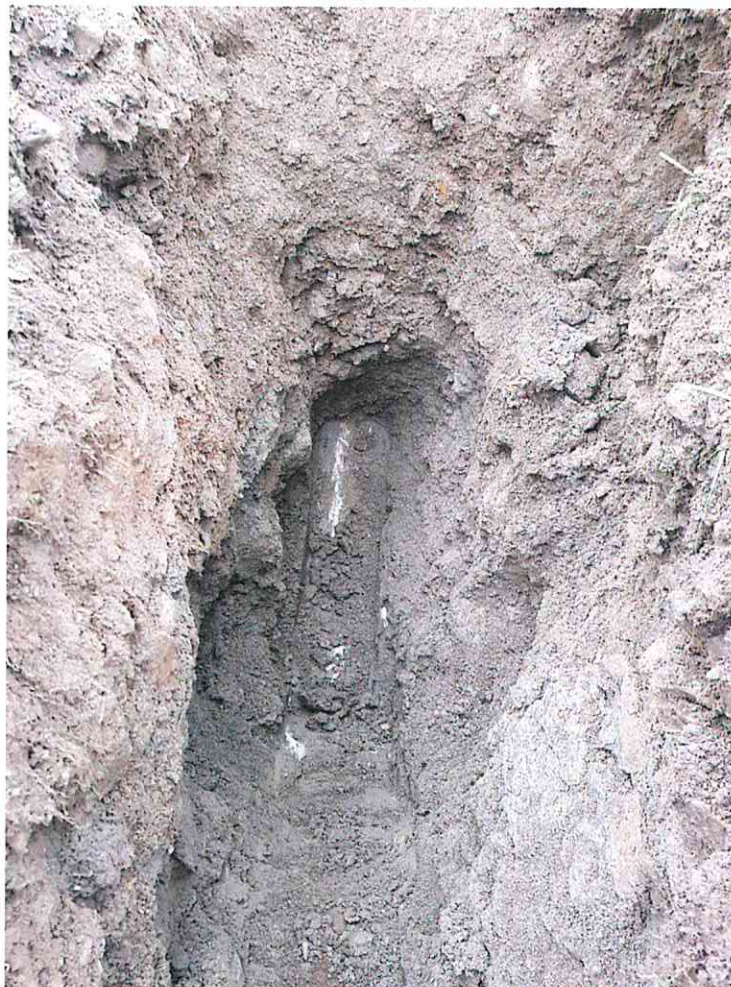
TP 03 – spoil



Project Number: 24665
Site: Monaghan Active Travel
Project Engineer: DBFL/CORA



TRIAL PIT PHOTOGRAPHY RECORD
TP 04



TP 04 – spoil



Project Number: 24665
Site: Monaghan Active Travel
Project Engineer: DBFL/CORA



TRIAL PIT PHOTOGRAPHY RECORD
TP 05



TP 05 – spoil



Project Number: 24665
Site: Monaghan Active Travel
Project Engineer: DBFL/CORA



TRIAL PIT PHOTOGRAPHY RECORD
TP 06



TP 06 – spoil



Project Number: 24665
Site: Monaghan Active Travel
Project Engineer: DBFL/CORA



TRIAL PIT PHOTOGRAPHY RECORD
TP 07



TP 07 – spoil



Project Number: 24665
Site: Monaghan Active Travel
Project Engineer: DBFL/CORA



TRIAL PIT PHOTOGRAPHY RECORD
TP 08



TP 08 – spoil

