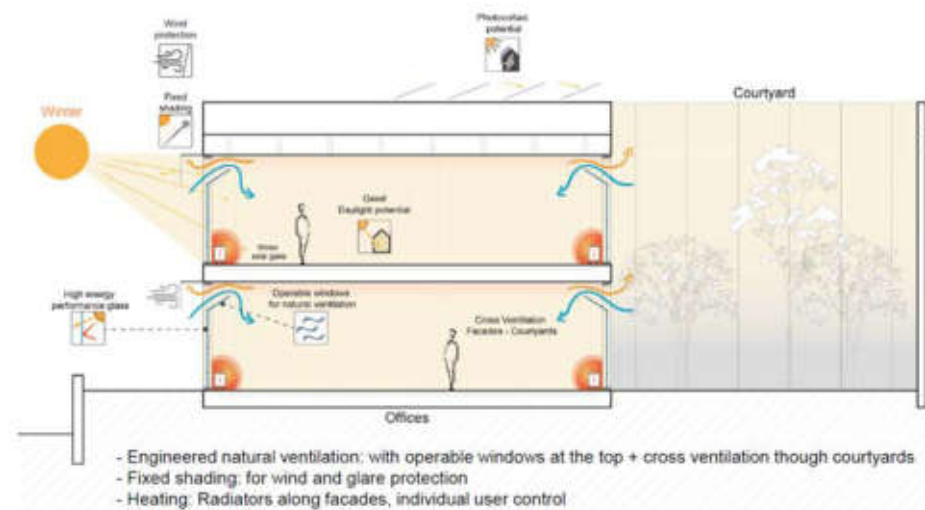


# INTEGRATED DESIGN STRATEGIES

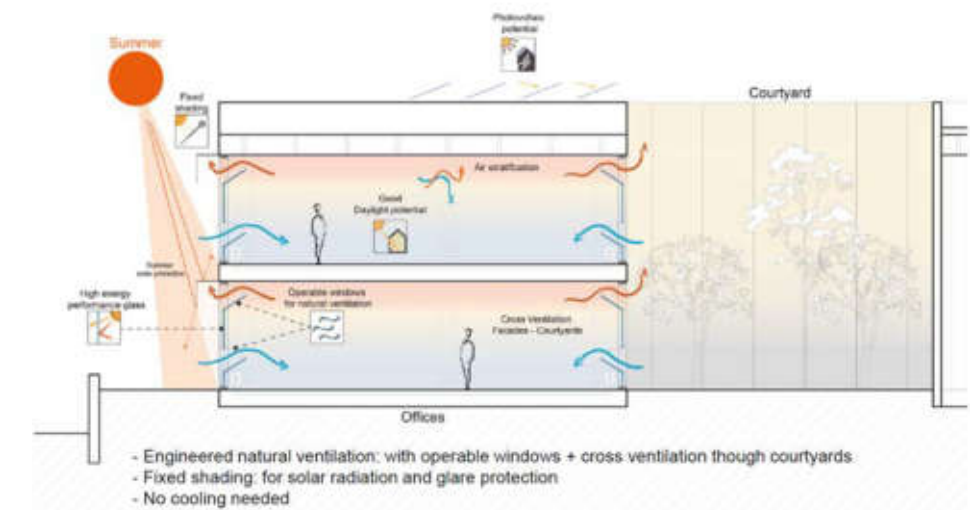
The Civic Offices are designed to reduce both the operational and embodied carbon footprint of the development. Operational carbon is reduced by a design that optimises natural daylight and ventilation of the internal environment, whilst meeting NZEB requirements as a minimum.

Consideration has been given to balancing access to daylight with solar gain in the façade design, which is refined according to its orientation to the sun. A passive low energy environmental strategy has informed the development of the massing and façade articulation of the proposed building.

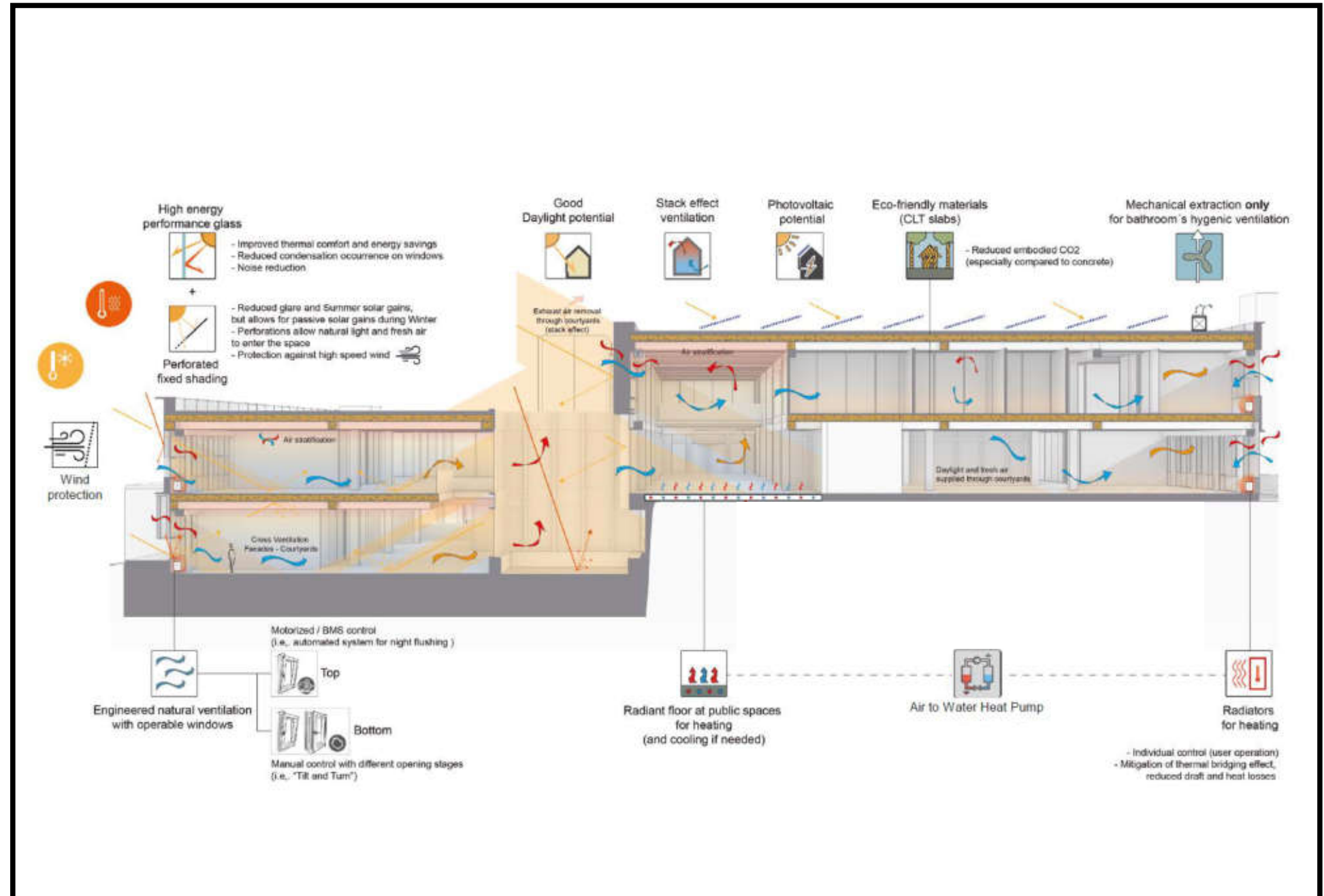
- High ceilings and facades as designed allowing access to natural daylight and ventilation; creating a pleasant and healthy working environment
- The orientation and proportions of the building are designed to optimise natural daylighting and minimise the reliance on artificial lighting.
- The facades and massing of the building are designed to optimise natural ventilation and minimise the reliance on mechanical ventilation
- The building heating system is driven by a heat-pump, minimising the use of fossil fuel
- Photovoltaic panels are integrated into grey roof on top of the office building generating electricity.



Climate Concept - Winter



Climate Concept - Summer







# 7. LANDSCAPE DESIGN