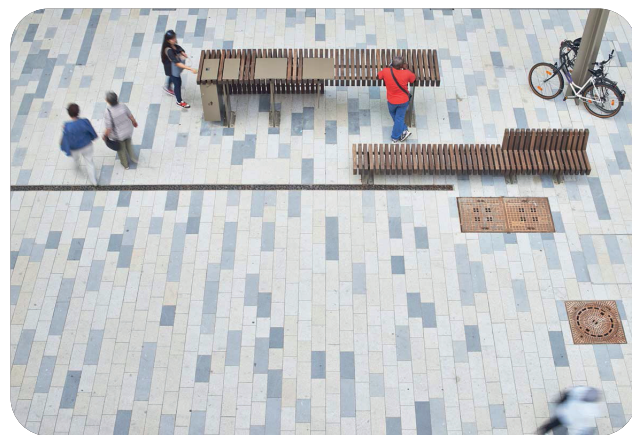
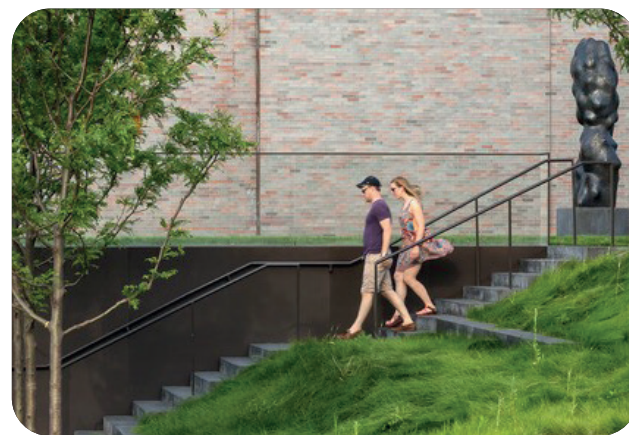


Fig7. Plan Showing St. Davnet's Row Gateway



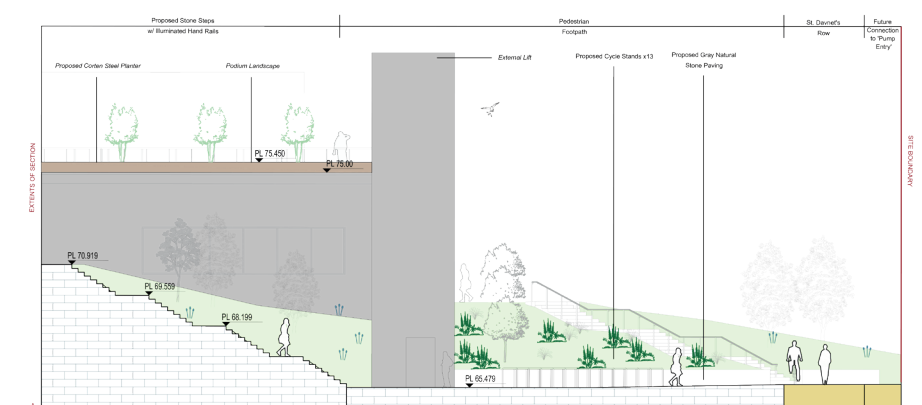
Indicative Image: Materials



Indicative Image: Steps



Indicative Image: Materials



Section A-a: Refer to '701 - Landscape Sections 01 of 03'

3.2 St. Davnet's Row - Gateway Space

By increasing permeability to St Davnet's Row via future proposals from Dublin Street and The Diamond Centre the South approach to the Civic Offices will integrate with the town core. Vehicular access to St Davnet's Row is limited to emergency vehicles and service vehicles only, this further enhances pedestrian safety and hierarchy along the approach from the South. Improvements to Infirmary Hill further strengthen existing links to Old Cross Square by widening the footpath and resurfacing.

Although the approach from the South to the Civic Office is the closest pedestrian connection to the Town it also faces challenging topography. Earthworks have been designed to reduce the severity of the gradient to a maximum 5%. The proposals provide further access via external lift, steps and level access from the South approach to ensure all abilities are catered for.